

Point-Intercept by the Invasive Species Program

Division of Ecological Resources
Minnesota Department of Natural Resources

Lake: Gorman **DOW Number:** 40003200 **Date of point-intercept:** 3-4 June 2010
County: Le Sueur **Observer[s]:** Joe Eisterhold and Lauren Beal
Time – on Water June 3: 1545 **Off water:** 1650
Time – on Water June 3: 1030 **Off water:** 1530

Type of inspection: Point-intercept survey for the distribution of curly-leaf pondweed.

Author[s]: Lauren Beal and Joe Eisterhold **Date of report:** 7 June 2010

Overall: Gorman Lake is located in Le Sueur County near Le Center. All 499 acres of Gorman Lake are littoral, and samples were taken from all points but 17, 125, and 130-132 as they were too shallow and inaccessible. These five points were not sampled and were not included with any statistical analysis. The number of sampled sites was 128 and all were 15 feet or less in depth. The water’s temperature was 78°F at 4:40 pm on 3 June 2010. The Secchi Disk reading for water clarity was 6 feet at waypoint 21. The maximum depth of the lake was 14 feet and the maximum depth sampled with plant growth was 11 feet. Plant growth occurs at a mean depth of 6.7 feet. Frequency of curly-leaf pondweed from sampled sites was 45%. This lake has one gravel county access on the west shore and one concrete DNR access on the south shore.

Plant Species	Type	Percent Frequency of Occurrence
Curly-leaf pondweed (<i>Potamogeton crispus</i>)	Submersed	45%
Coontail (<i>Ceratophyllum demersum</i>)	Submersed	10%
Elodea (<i>Elodea canadensis</i>)	Submersed	65%
Filamentous algae (<i>Aphanizomen</i> spp. and <i>Nostos</i> spp.)	Submersed	50%
Sago Pondweed (<i>Potamogeton pectinatus</i>)	Submersed	22%
Stonewort (<i>Nitella</i> spp.)	Submersed	2%
Lesser Duckweed (<i>Lemna minor</i>)	Floating	1%
Frequency of sites with submersed native species		67%
Frequency of sites with submersed native and non-native species		77%
Average number of submersed native taxa per sample site		0.916
Average number of submersed native and non-native taxa per sample site		1.324

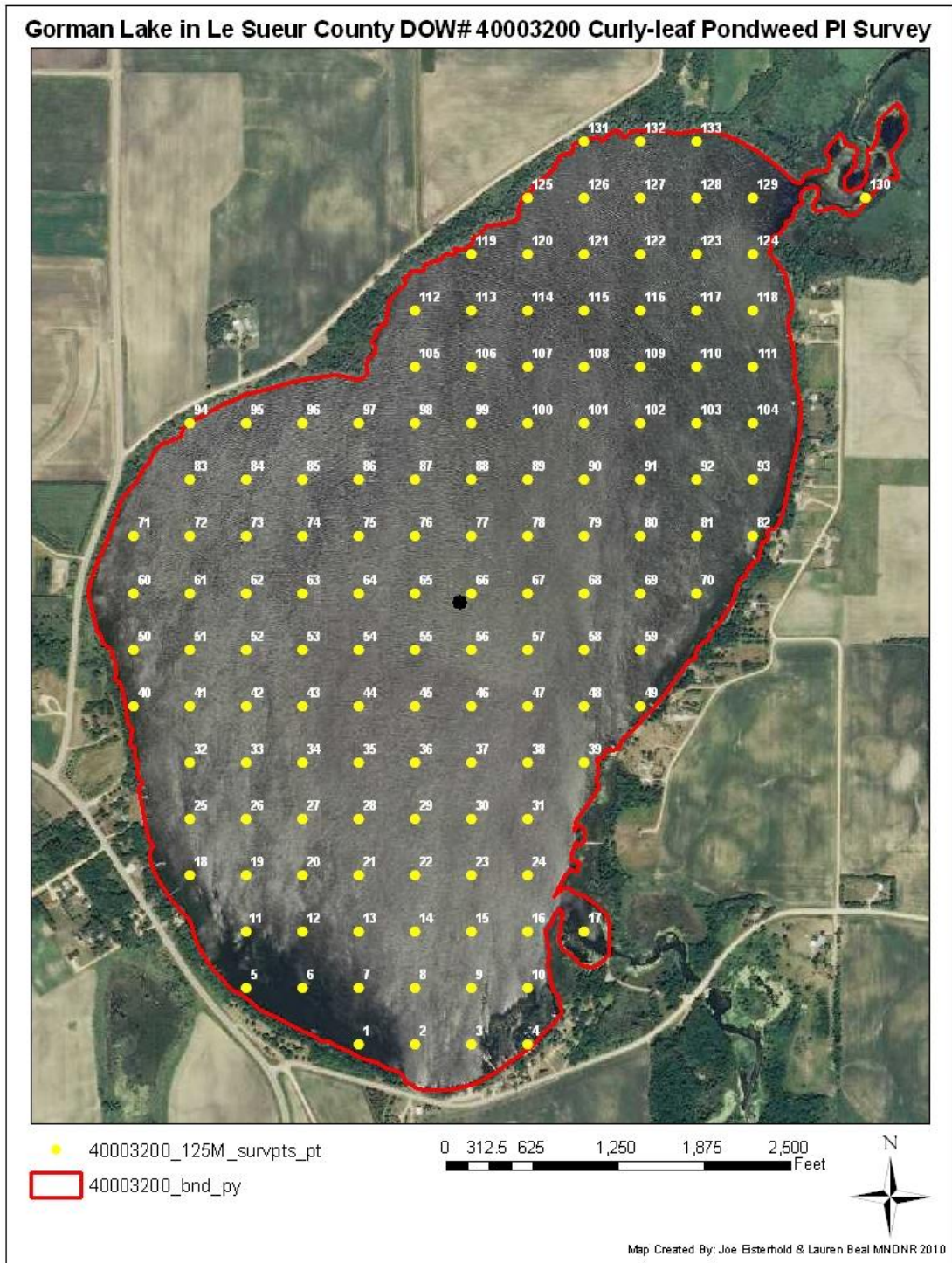


Figure 1. Lake Gorman points sampled. Points 17, 125, and 130-132 were removed from sampling because of inaccessibility.

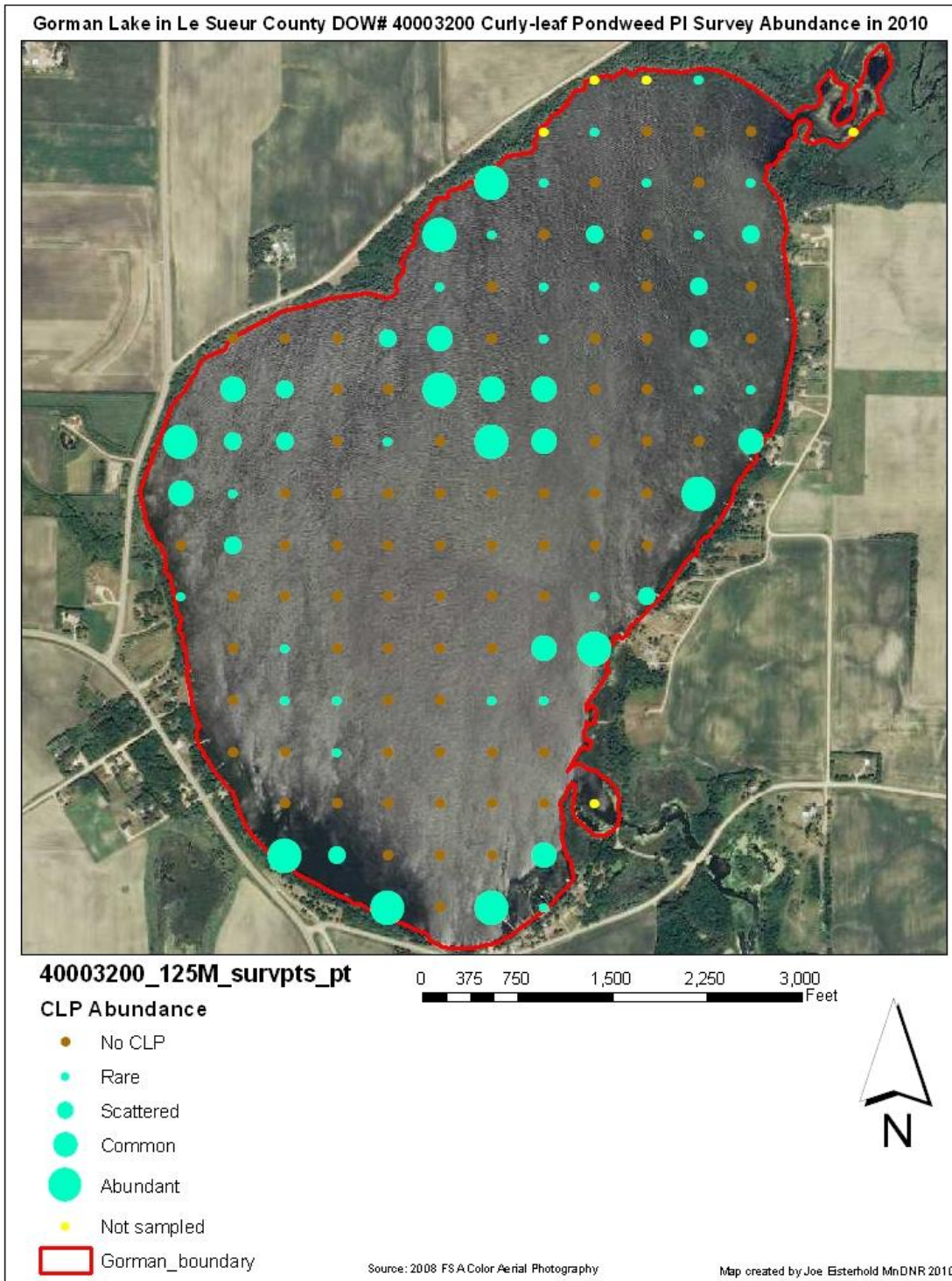


Figure 2. Abundance of curly-leaf pondweed on 3 & 4 2010.



Figure 3. Filamentous algae covered the boat trailer after an afternoon in June of point-intercept surveying.



Figure 4. Summer Intern, Lauren Beal, with a rake full of curly-leaf pondweed.