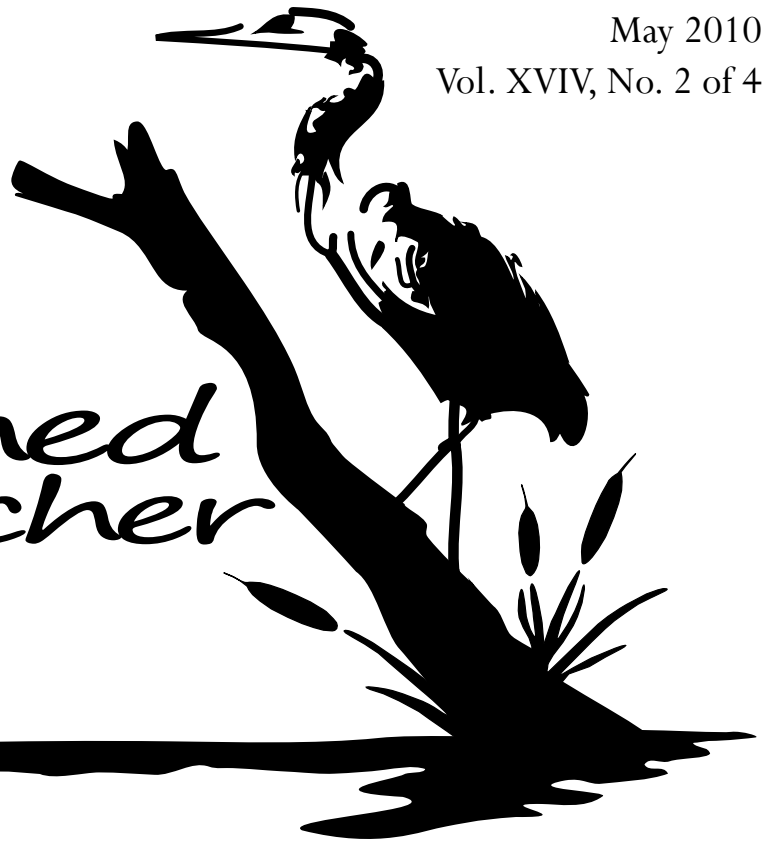


# Watershed Watcher

A publication of the  
Cannon River Watershed Partnership



## 2010 CRWP Annual Meeting

CRWP celebrated our 20th anniversary at the Northfield United Church of Christ in early March. The highlight of the evening was a series of stories told by local people for whom the river and its tributaries play a significant role in their lives.

Brynnie Rowberg, one of the earliest CRWP members, described winters on the Cannon during her childhood. A man would sweep the snow away from an area and kids of all ages would clamp on their skates, playing tag, "hockey" and crack the whip. Blocks of ice cut from the river were hauled in horse-drawn wagons to Fremouw's 5th Street Icehouse, ready to be delivered to local homes' iceboxes.

Former County Commissioner Molly Woehrlin told about the creation of the CRWP during the time in the late 1980's when counties began to get involved in water issues. Supported financially and organizationally by The Nature Conservancy, activists formed the non-profit organization in 1990. The 25-member CRWP board includes not only citizens, but also representatives of county boards and Soil and Water Conservation Districts.

Allene Moesler is a former CRWP Executive Director. She reminded the group that staff member Chris Robbins created a Watershed Plan, funded by The McKnight Foundation. An offshoot of that process was the increased visibility of the only trout stream in Rice

County, Rice Creek. Robbins and a local committee initiated development of city regulations to protect this treasure.

Dave Legvold grew up on a dairy farm and use to fish in Spring Brook. Love of the stream and nature prompted him to pursue a teaching career, and after retiring from teaching, he served several years as CRWP Executive Director.

Former CRWP watershed analyst Justin Watkins now works in water issues for the state of Minnesota. He said CRWP is held up as a model for other areas now trying to emulate the organization to protect their watersheds.

Executive Director Beth Kallestad announced the kick off of the 20th Anniversary Campaign. CRWP has set a goal of raising \$20,000 by July 1, 2010 (\$1000 for each year since it was founded). Funds will be used to sustain and build on current work.

Local legislators Representative David Bly and Senator Kevin Dahle joined the group in celebrating 20 years of collaboration toward protecting and improving the water quality and natural systems of the Cannon River watershed.

*Jane McWilliams*

Jane McWilliams is a  
CRWP member.

# The Current

*from the Executive Director*



An early spring has brought a halo of green to the trees outside my window. I'm just waiting for the leaves to pop open and the flowers to bloom. The work of protecting and improving water quality always seems more real to me when the weather is warm and spending time on and in the water is more desirable to me. There is lots of good work going on in the watershed as you'll read about in this newsletter. Progress is being made on septic issues on Roberds lake, we are almost done with a mapping project that will provide information on shoreland land use to guide where we need to make improvements, the Rice SWCD is helping to cut down on stormwater by selling rain barrels, members are doing cool volunteer activities like counting dragonflies to help fill in knowledge gaps in the watershed, and our watershed wide River Cleanup is being planned for September 18th this year. All of these activities bring us a small step closer to achieving our vision of clean, healthy water. I hope you are all able to take some time this spring and get out and enjoy our wonderful watershed!

*Beth Kallestad*

## 2010 CRWP Annual Meeting



In surrounding photos, clockwise from left to right: Lisa Carey, Beth Kallestad, Boyd Fuller, Molly Woehrlin, Allene Moesler, Justin Watkins, Senator Kevin Dahle, Brynhild Rowberg. Members in attendance in the center photo.

## *Roberds Lake Wastewater Update*

Last year, Rice County Planning and Zoning conducted a sewage system survey around Roberds Lake to determine if there are any imminent health threats. Unfortunately, they found several. The local homeowners were notified and they began researching remedies. The first option was to install a new drain field or mound system on their own property. For many, after looking into this option, there was not adequate land available, suitable soil or too high a water table. The second option considered was to get a group of homeowners together and acquire a neighboring piece of land to construct a community cluster system. This attempt also failed due to difficulties in finding available and suitable land. The third option was to consider installing a pipe going around the lake and emptying into the City of Faribault's treatment facility.

A group was formed and the City of Faribault was approached. The City informed our group that in the past, they have always refused to allow such a connection to an entity unless it was formally annexed into the City boundaries. After some discussion, the City decided they would consider such a connection provided there were acceptable limits on the service area and that our lake residents would be responsible for all costs involved. The group's next step was to obtain feasibility studies to try to determine what the overall costs for installing such a collection system would be. At this point, the system that seems most affordable is a low pressure one where each homeowner would have a grinder pump installed under the ground with a pipe coming from the house to the pump, and another pipe going from the pump to the pipe surrounding the lake.

As is probably common with locally formed citizen groups, the process moves slowly due to us having to learn the technical aspects, engineering needs, citizen concerns as well as township, county and city requirements. Throughout this process, we have been fortunate to have Aaron Wills from CRWP aid us. We have found him a great resource since he has and continues to work with similar projects in Southern Minnesota. We appreciate his advice and assistance in this process.

*Ted Tuma*  
*Roberds Lake Association*

---

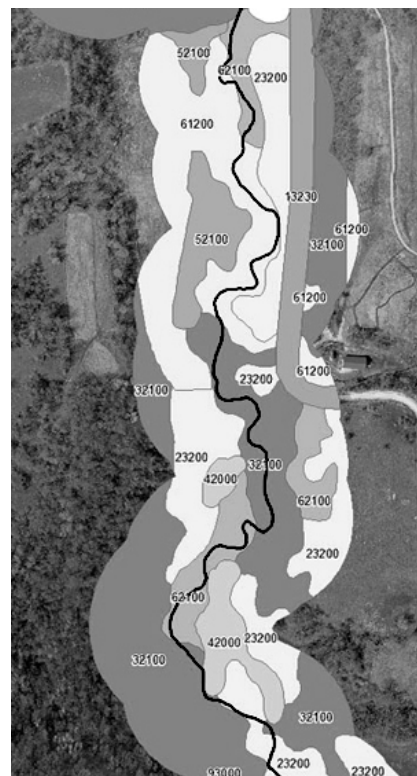
## *Close to Success!* *Shoreland Mapping in Southeast Minnesota*

In late 2008, CRWP began work on the Shoreland Mapping Project, an effort to achieve a better understanding of the landuse around southeast Minnesota's major streams and rivers. The project was funded through the Whitewater Watershed Project by a grant from the Minnesota Environment and Natural Resources Trust Fund. With over 3,800 miles of stream to map in ten counties across southeast Minnesota, I'm happy to report with only one county remaining to map, the project will finish successfully by the end of June.

Using Geographic Information Systems (GIS) to digitally map shoreland, counties across the region will now be able to better target shoreland restoration in those areas in most need of attention. The positive response from the state, counties, and others regarding the usefulness of the data has been wonderful! It is CRWP's hope that this new data is used to improve habitat and water quality throughout the Cannon River watershed and southeast Minnesota.

For more information, contact Ross Hoffmann or visit the project's website at:  
<http://www.crowp.net/Programs/Conservation/ShorelandMapping/ShorelandMapping.html>

*Ross Hoffmann*



Mapping data example.

## *CRWP Partner: Owatonna Izaak Walton League*

The Izaak Walton League may be one of the oldest conservation organizations in the Cannon River Watershed, but it sure does not act like it. Chartered in 1922, the Ikes soon became active in clean water campaigns across Minnesota. At the urging of Will Dilg, national president from Winona, MN, the group convinced the U.S. Congress to establish the Upper Mississippi River National Wildlife and Fish Refuge on June 7, 1924.

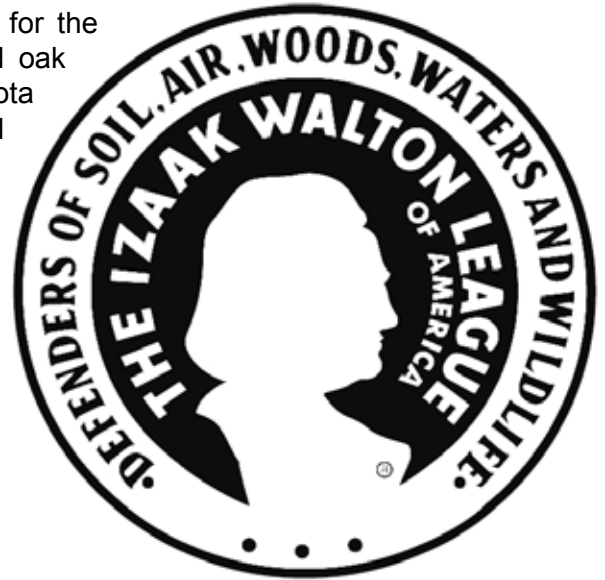
For encores the Ikes worked tirelessly to set aside the Boundary Waters Canoe Area Wilderness (BWCAW) and the Voyageur's National Forest in northern Minnesota.

Closer to home the Owatonna Ikes purchased the first land that became Rice Lake State Park. And later in the 1940's became the caretakers of the Game and Fish Building at the Steele County Free Fair. The third week in August it becomes a beehive of activity as a dozen conservation/environmental groups display their projects. Several hundred fish fill the aquariums and the central pond. Trophy mounts line the walls and plaques describe the role of wildlife in the natural world. This year the fair is August 17th through the 22nd.

The Reding Environmental Education Center is headquarters for the Owatonna chapter. It is surrounded by 23 acres of restored oak savanna and prairie. This spring, the Ikes partnered with Minnesota Pheasants Forever to acquire a Lessard grant of \$180,000 to add 45 Acres to the Somerset Wildlife Management Area.

For exercise the Owatonna Ikes have adopted (and regularly clean) two miles of Hwy 218, three miles of the Straight River and a tributary, plant trees on the citywide Arbor Day and co-sponsor a safety camp for elementary children.

Membership is open to anyone concerned about preserving and promoting our outdoor heritage. Please contact Gary Schwartz at (507) 451-6676 or email [presike1@live.com](mailto:presike1@live.com).



*Gary M. Schwartz*

---

## *Conservation Farming and Clean Water in a Challenging Economy*

On Wednesday, April 7th CRWP hosted our 2010 summit: *Conservation Farming and Clean Water in a Challenging Economy*. Attendees were a diverse group including farmers, state agency staff from the Department of Agriculture and Pollution Control Agency, Soil and Water Conservation District staff, CRWP members, and many others.

We heard from George Boody from the Land Stewardship Project talking about his ideas for "Water Quality 2.0" and how we need to take a landscape approach of conservation systems rather than practices in isolation. Information was provided on the Minnesota Nutrient Management Initiative and the BMP Challenge as ways farmers can try out some conservation practices without losing money. At lunch we heard from the Rural Enterprise Center about their out of the box method of creating a system for raising poultry and other small crops in a way that provides good conservation and much needed income for rural residents. Research on how bioreactors can be used to treat water to remove nitrates and how utilizing a two-stage ditch model can allow ditches to become treatment systems to remove pollution were discussed. We ended the day with some round table discussions on using cedar trees for stream bank stability, mob grazing of cattle in the Sogn Valley, calculating the benefits of using manure as fertilizer and a new buffer project in the watershed.

Thanks to all our presenters and attendees!

*Beth Kallestad*

## The Dragonflies and Damselflies of the Cannon River Watershed

Dragonflies and damselflies are popular insects, right up there with butterflies and honeybees. Even still we know surprisingly little about them; for instance, we don't even have complete knowledge of what species inhabit the rivers and lakes and wetlands of the Cannon River Watershed. One-hundred and thirty-nine species are recorded in Minnesota, and about half of these might possibly be found here.

*Dragonflies of the North Woods* by Kurt Mead and *Damselflies of the North Woods* by Bob DuBois are the recommended guidebooks for this area—both have good photos, descriptions, and range maps. Two very useful websites are <http://www.mndragonfly.org> and <http://www.odonatacentral.org>. The first site is for the Minnesota Odonata Survey Project (MOSP), a volunteer effort launched by Kurt Mead in 2006 to determine the ranges and distributions of Minnesota's dragonfly and damselfly populations. The second site is for Odonata Central, a world-wide database that includes state and county checklists, and numerous photos. By learning to identify species, by taking photos, and by reporting sightings, residents have the exciting opportunity to further our knowledge of dragonflies and damselflies, both locally and world-wide.



Example of *Sympetrum* Genus of dragonfly, taken in the St. Olaf College natural area.

On Saturday, June 5, CRWP members who have an interest in these fantastic insects and want to learn more about them are invited to join me on a two hour Dragonfly Walk. We'll meet at 10AM in the parking lot nearest Skoglund Pond at the northwest corner of the St. Olaf campus and then spend several hours exploring the wetlands. Cameras and close-focusing binoculars are encouraged.

And for even more dragonfly fun, on Saturday, August 28, Kurt Mead will be offering a full-day MOSP Workshop at River Bend Nature Center in Faribault.

*Scott King*

Scott King is a CRWP member and a MOSP volunteer citizen scientist since 2007.

---

## ***Rice County SWCD*** ***Rain Barrels*** ***For Sale!***

Save water, reduce stormwater runoff, and enhance plant growth with your own rain barrel! Rain barrels coming in two varieties, oak and plastic. They both are assembled and ready to install at your home or business. Rain barrels decrease groundwater use (and water bills), reduce stormwater runoff, and is better for plants because it is soft water, has no chlorine or other added chemicals. All barrels come with a brass spigot, over flow valve, and debris screen to keep trash out of the barrel. Order today for pickup in May!

***Oak: \$160 per barrel | Plastic: \$80 per barrel***

***<http://www.riceswcd.org> | (507) 332-5408***



## Meet the Board: Bob Koch



Bob Koch has been on the CRWP board since March of 2009. He initially became aware of the organization through Jim Bassett and Allene Moesler; neighbors of his on Lake Byllesby and past CRWP board members. Though his initial interest in CRWP was due to his background in environmental protection he also was compelled by the practical issues of living on Lake Byllesby and experiencing a few of those unpleasant blue-green algae blooms. Bob wanted to be part of an effort to leave a cleaner environmental legacy, along with helping make an immediate difference in protecting and improving the lake where he resides.

Having grown up in Peoria, IL, the outdoors, nature and maps have always been of interest to Bob. After getting his undergraduate degrees in Geology and Biology from Illinois State University he spent some time as a groundwater geologist for the Illinois Environmental Protection Agency hoping to make an impact on cleaning up solid waste disposal sites. He then decided to take on graduate school in geology with an assistantship that included fieldwork in Antarctica! This was only the beginning of his overseas adventures. First doing an eleven year stint as a petroleum geologist in Houston, he then headed to Indonesia for eight years followed by six years of work in the central Asian former Soviet Republic of Kazakhstan and a year in Moscow. After his company sold out, Bob retired and decided to settle in the Cannon Falls area – a region he became familiar with during previous summer travels enroute to his favorite fishing venues on Lake of the Woods in Canada.

Besides his board responsibilities at CRWP and occasional petroleum consulting, Bob also volunteers as president of the Lake Byllesby Improvement Association and is a member of the Cannon Falls Rotary Club. He enjoys fishing, golfing, hiking, bicycling, traveling, reading, and writing the occasional letter to the editor.

*Lisa Carey*

## Volunteer Opportunities

### **Voices of the Valley on the Cannon Valley Trail**

Represent CRWP on the trail by displaying information and sharing our mission with trail visitors.

### **Help CRWP Staff County Fairs**

Dakota County Fair - August 19th to the 15th  
Rice County Fair - July 20th to the 25th  
Steele County Fair - August 17th to the 22nd  
Waseca County Fair - July 14th to the 18th

### **Volunteers Needed in Le Sueur County Lake Region!**

Mankato State University (MSU) Water Resources Center is currently conducting a Total Maximum Daily Load (TMDL) study on the Jefferson-German Lakes Chain and Lake Volney in Le Sueur County. Staff members will be monitoring 8 inflows/outflows between the two lake systems as well as 6 in-lake sites. Volunteers are needed to assist with water sampling.

They would also like to work with lakeshore property owners (or landowners) that have a tile outlet on their property and are willing to allow MSU staff access to sample those lines. Sampling will likely be infrequent, three to four times through-out the summer, and immediately following rain events.

If members are interested in participating in the sampling process or allowing property access please contact Katie Brosch at [katherine.brosch@mnsu.edu](mailto:katherine.brosch@mnsu.edu) or (507) 389-2704.

**Contact Leslie Kennedy at (507) 786-3915 or at [leslie@crwp.net](mailto:leslie@crwp.net) to sign up!**

## Welcome New Members!

### Stewards - Giving \$1,000 to \$4,999

Archer Daniels Midland

### Benefactors - Giving \$500 to \$999

Cannon Falls Rotary Foundation

### Protectors - Giving \$100 to \$499

Ann Marie Boyle & Paul Jackson

J.R. Bruender Construction, Inc.

Lake Francis Association

### Friends - Giving \$50 to \$99

Dave & Laurie Burbank

Julie Maxson

### Sponsors - Giving \$26 to \$49

Cedar Lake Electric, Inc.

Pat Tieskoetter

Richard Johnson

Erica Zweifel

### Members - Giving \$25

Donald & Gretchen Becker

Anna Brown

Adam Gurno

Diana & Dave Hering

Gary & Georgia Joachim

Sarah Mensing

Marie Nelson

Noble RV

June & Joseph Orrie

Charles & Betty Rafferty

## Thank You for Your In-Kind Donations!

Cannon River Winery

Carol McKittrick

Jim and Martha Waddell

Marilyn Meline

Dan Milbert

Gary Wagenbach

Gary Mogren

Barb Becksted

Lisa Carey

Ferndale Market

Julie Risberg, Northwoods by Nature

Thousand Hills Cattle Company

Trophy House

Burly's Coffee

Old Market Deli

Brick Oven Bakery

and

First English Lutheran Church  
of Cannon Falls

## September 18, 2010 - SAVE THE DATE

### CRWP 2nd Annual Watershed Wide River Clean-up

Owatonna to Faribault, up to Northfield and down to Red Wing!

September 18, 2010, 9AM - 12PM

Join hundreds of volunteers making a difference in water quality!

If you are interested in participating please contact:

Lisa Carey at (507) 786-8400 or [lisa@crwp.net](mailto:lisa@crwp.net)

## Correction

In the February 2010 CRWP Annual Report, under River Clean-up sponsors, we listed "Thousand Acres Cattle Co." as a sponsor. The contributor's name is actually Thousand Hills Cattle Company. We regret the error and appreciate Thousand Hills Cattle Company's support of the River Clean-up.



## Thank You Volunteers

Pat Anfinson

Ryan Barney

Jim Bassett

Karl Bischoff

Nancy Braker

Chris Broden

Don Buendorf

Nick Buttera

Matt Chowen

Barbara Christensen

Dick Dalton

Paul Drotos

Bill Dugan

Matt Durand

Rick and Joyce Elsen

Charles Fratzke

Gene Ganske

Katy Gillispie

Diana Hering

Marcia Hetlevedt

Randy Holz

Ron Janning

Bob and Carrolle Johnson

Nevin Kennedy

George Kinney

Bob Koch

Aleta Kolan

Cathy Larson

Steve Larson

Ed Lee

David Legvold

Phillip Lehner

Steve Macke

Al Malecha

Lorn Manthey

Ann McGovern

Allene Moesler

Kristy Moesler

B-J Norman

Todd Resler

Joey Robison

Kathy Salaba

Steve Salaba

Peg Schwendeman

Steve Standke

Jamie Stanley

Jim and Pat Sundquist

Ted and Sue Tuma

John Van Bergen

Jim Waddell

Gary Wagenbach

Kevin Wentworth

Buster West

Roy Winjum

Mark Wolf



Cannon River Watershed Partnership  
 8997 Eaves Ave  
 Northfield, MN 55057  
*Address Service Requested*

**NONPROFIT  
 PAID  
 DUNDAS, MN 55019  
 PERMIT #22**

**CRWP Board of Directors**

**CRWP Staff**

**Citizen Members**

Bernie Baumann - Le Sueur Co.  
 Ann Marie Boyle - Rice Co.  
 Byron P. Brady - Steele Co.  
 Nancy Braker - Rice Co.  
 Carmen Dorr - Rice Co.  
 Paul Drotos - Goodhue Co.  
 Matt Durand - Steele Co.  
 Katy Gillispie - Rice Co.  
 Diana Hering - Le Sueur Co.  
 Bob Koch - Dakota Co.  
 Matt Malecha - Rice Co.  
 Lorn Manthey - Dakota Co.  
 Jim Waddell - Rice Co.

Beth Kallestad - Executive Director  
 Lucas Bistodeau - Water Monitoring Program Coordinator  
 Lisa Carey - Community Membership and Outreach Coordinator  
 Sheila Craig - Community Sewage Treatment Facilitator  
 Ross Hoffmann - Water Quality Project Coordinator  
 Leslie Kennedy - Office Manager/Volunteer Coordinator  
 Aaron Wills - Community Sewage Treatment Facilitator

Newsletter Editing by Leslie Kennedy  
 Newsletter Design and Layout by Ross Hoffmann

**County Commissioners**

Bob Culhane - LeSueur Co.  
 Joe Harris - Dakota Co.  
 Bruce Kubicek - Steele Co.  
 Galen Malecha - Rice Co.  
 Dan Kuhns - Waseca Co.  
 Richard Samuelson - Goodhue Co.

**SWCD Board Members**

Donald Banks - Goodhue Co.  
 Dan Hansen - Steele Co.  
 Cletus Gregor - LeSueur Co.  
 Chris Nielsen - Dakota Co.  
 Ron Purcell - Waseca Co.  
 Gary Wagenbach - Rice Co.

Phone: 507-786-8400  
 Fax: 507-786-8039  
[staff@crwp.net](mailto:staff@crwp.net)  
[www.crwp.net](http://www.crwp.net)

Our mission is to engage people in protecting and improving the water quality and natural systems of the Cannon River watershed.



Please recycle this newsletter when finished reading by passing it on to someone else!



This contains 50% recycled fiber, 20% post-consumer waste, soy-based ink, and is acid free.

